

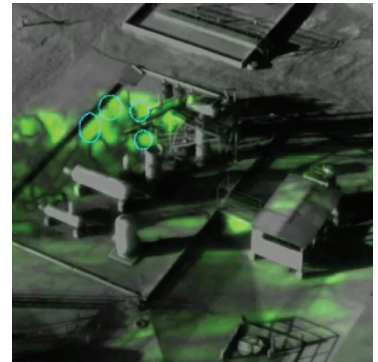
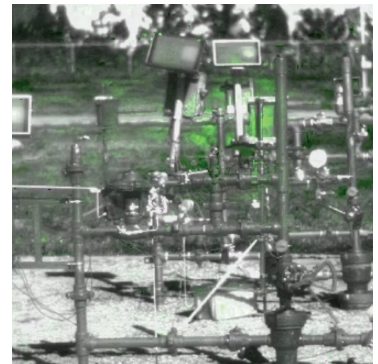


## EXO<sup>®</sup> OGI

### FIXED SHORT RANGE OPTICAL GAS IMAGING CAMERA



The IP EXO OGI Camera is an optical gas imaging sensor that is the professional's choice to monitor oil and gas applications and provide maximum operational safety and flexibility. As the world moves toward protecting the environment and creating a safer workspace, automatic methane and other hazardous gas leak detection methods like optical gas imaging are becoming a common requirement for the oil and gas market.



Quickset's EXO OGI Camera meets the growing demand for high-performance, OGI and leak detection solutions and offers 24/7, clear and accurate observation through difficult operational and environmental conditions significantly enhancing detection, identification, and appropriate response to potential safety threats. The integration of various sensors into your system increases the level of safety intelligence available to your team.

#### KEY FEATURES

- Cost effective, easy integration.
- 365/24/7 detection in harsh environments
- Integrated H.264 and M-JPEG encoder with real time streaming video
- Gas enhancement mode colorizes gas leaks
- Long life HOT MWIR sensor
- Leak detection of 22 different industrial gases

#### UNDER DEVELOPMENT: EXO-OGI, EXPLOSION PROOF EXO-OGI CAMERA



## CAMERA PERFORMANCE

Input Voltage	12 VDC
System Power	16 W Operational; 24 W Peak
Video Compression	H.264 (High, Main and Baseline profiles), Motion JPEG
Resolutions	NTSC
Frame Rate (Video encoder supports the following)	H.264: 640x360, 4CIF and Motion JPEG: 4CIF, VGA, 2CIF, CIF
Video Streaming	Configurable streams, user selectable H.264 or MJPEG
System Administration	Desktop GUI
Network	Standard 10/100 Base-T Ethernet port
Connector	Mil-spec, back egress
Ingress Protection Rating	IP66, sealed and pressurized camera housings
Salt/Fog Resistance	MIL-STD-810G, Meth 509.4
Operating Temperature	-32° to +55°C (-25.6° to +131°F)

## EXO GEMINEYE-OGI MODELS

**EXGVB-F22Z1NF**  
25 mm Thermal  
Camera-OGI

**EXGVB-F22F2NF**  
50 mm Thermal  
Camera-OGI I

## OGI CAMERA PERFORMANCE SPECIFICATIONS

Pixel Pitch	15µm
Maximum Lens Aperture	F1.5 (25 mm); F1.5 (50 mm);
Horizontal Viewing Angle	21.7° (25 mm); 11.0° (50 mm);
Digital Zoom	2x, 4x, 8x Digital Zoom
Frame Rate	30 Hz NTSC; 25 Hz PAL

## 22 DETECTABLE GASES

Gases	Acetic Acid, Benzene, Butadiene, Butane, Ethane, Ethylbenzene, Ethylene, Heptane, Hexane, Isoprene, Methyl Ethyl Ketone (MEK), Methane, Methanol, MIBK, Octane, 1-Pentane, Propane, Propylene, Sulfur Dioxide, Toluene, Vinyl Chloride and Xylene.
-------	--

## EXO-OGI ACCESSORIES

	Part Number	Description
Power Supply Outdoor	7-EX00GI-PS	Power Supply, Outdoor, Pole Mountable, 12 VDC, 6 A
Mounts	7-17567-PS	Pedestal Mount
	7-17564-PS	Wall Mount
	7-17565-PS	Pole adapter (requires addition of wall mount)
	7-17566-PS	Corner adapter (requires addition of wall mount)



QuicksetDefenseTechnologies LLC



@QuicksetDefense



@QuicksetDefense



@QuicksetDefense