

QMP™/QMP-R™ Mobile Positioner Series

The Moog-QuickSet QMP™ was specifically designed to meet the most rugged of ground vehicle mobile environments. The QMP design uses the same rugged design techniques of the QPT-90 drive train, electronics and protocol interfaces, allowing simple integration to systems that already control the QPT-90. An internal tilt shaft eliminates the need for a tabletop. Balancing the load in tilt minimizes the torque required to move the payload in tilt resulting in greater payload capacity. The QMP-R™ will support radar or other payloads on a platform at the top of the unit that can be positioned independently from the Pan & Tilt.

Slip ring and stepper motors ensure continuous rotation and precision variable speed control. Cable management issues are eliminated through the implementation of moving payload connectors at each arm on the tilt axis. The Moog-QuickSet Universal wiring configuration provides pass-through and/or internal control interfaces for easy sensor integration.

AVAILABLE FEATURES

- RF pass-through turret
- Balanced payloads up to 300 lbs for static installations, 150 lbs for mobile installations
- Unbalanced payloads up to 90 lb ft (122 Nm)
- Fixed or Mobile Installations
- Mil-Spec Connectors
- Tough metal housing and gearing for durability in harsh environments
- Marine configuration that meets IP-67 standards
- Universal wiring for sensor integration

heaters standard

SENSOR INTEGRATION

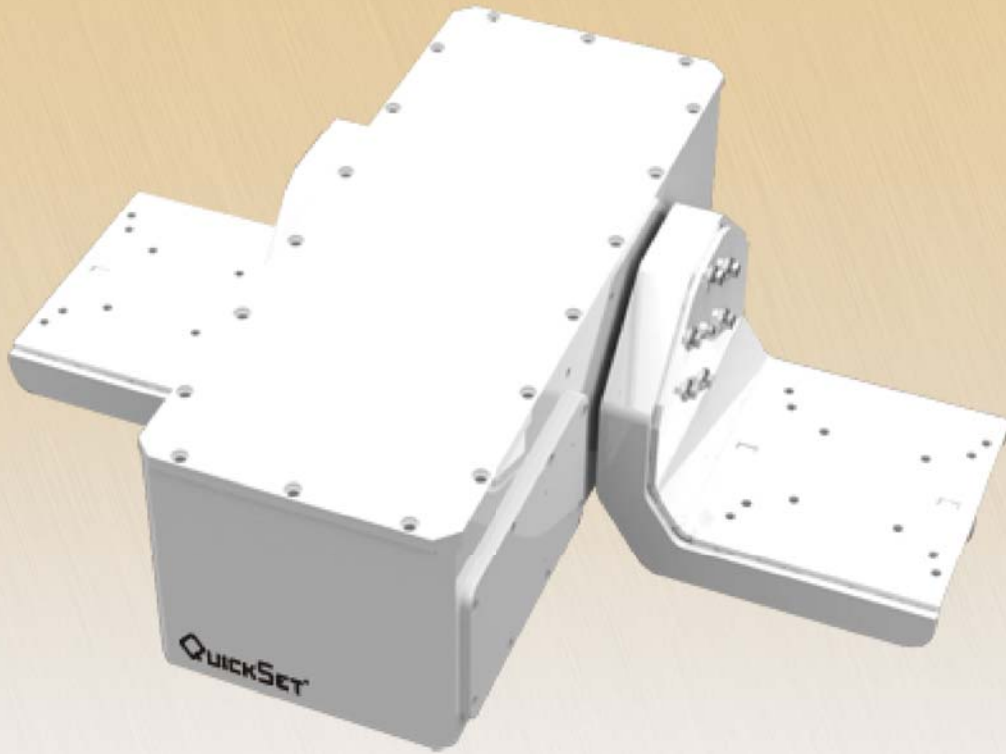
- Radar Antenna Systems
- Multi-Spectrum Cameras (Visible/NIR/SWIR)
- Thermal Imagers (LWIR)
- IR and Visible Illuminators
- Laser Range Finders
- Communication Antennas
- Acoustic Devices

- Thermostatically controlled

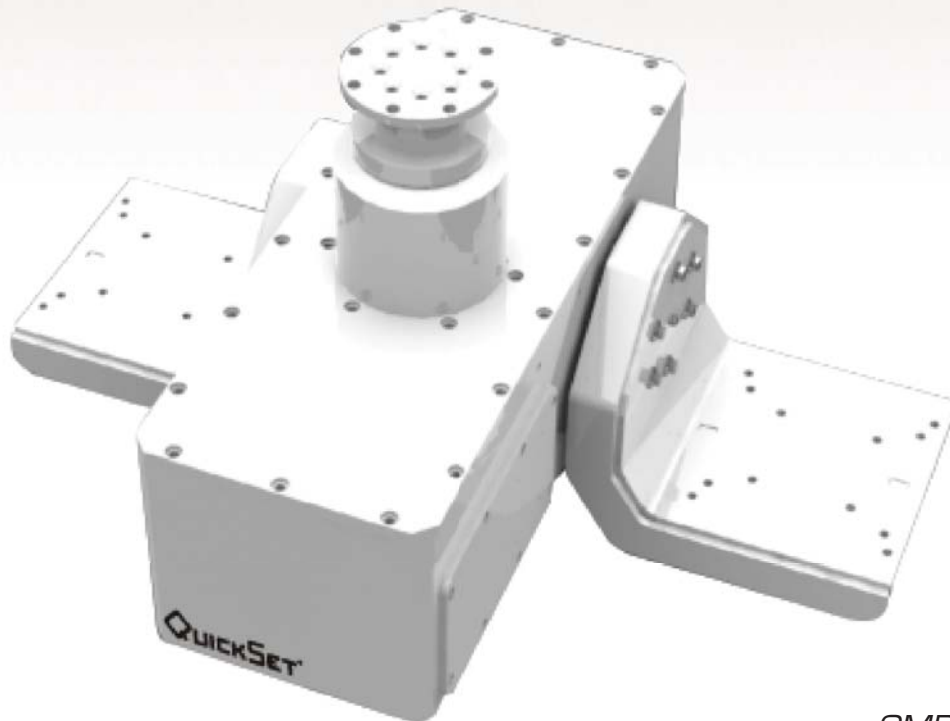
QMP™/QMP-R™ SERIES

Standard Performance

Load Capacity	Static installation - 300 lbs (136 kg) balanced Mobile installation - 150 lbs (68 kg) balanced
Operating Voltage Range	24VDC (±4VDC)
Total Power	Pan & Tilt Axes: 2.6A pk, 2.0A continuous at 24VDC Heater: 4.4A at 24VDC Standby: 0.5A at 24VDC (no heater current)
Pan-Axis Range	360° continuous rotation (slip ring)
Pan-Axis Speed	0.005° - 30°/sec
Tilt-Axis Range	180° (±90°)
Tilt-Axis Speed	0.005° - 8°
Internal Heater	Thermostatically controlled 0°C on/1.7°C off (32°F on/35°F off)
Operating Temperature	-15°C to 55°C (without heater) -30°C to 55°C (with heater) 5°F to 131°F (without heater) -22°F to 131°F (with heater)
Rotational Limits	Fixed tilt hard limit, adjustable soft limits on both axes
Feedback	Optical Encoders (0.01° readout)
Repeatability	0.1°
Duty Cycle	20%
Motor Type/Drive	Stepper
Communication to Pan & Tilt	RS232/422/485, IP Ethernet: 10/100 Base-T
Communication to Sensors	RS232/422, Ethernet Pass-Through
Control Protocol	QuickSet or Pelco D
Connector Specifications	Mil-Spec grade used on all configurations
Load Connector Interfaces	2 Mil-Spec connectors on each tilt axis platform
Materials	Housing 6061-T6 Aluminum, stainless steel hardware, permanently sealed radial ball bearings.
Finish/Color	White powder coat paint over alodined chromate for corrosion resistance standard. Other colors and CARC available upon request
Weight	94 lbs (43 kg)
Dimensions	See Page 3
Test Cable and Software	6 ft test cable and software include



QMP



QMP-R



3650 Woodhead Drive, Northbrook, IL 60062-1895 USA
+1.847.498.0700 Fax: +1.847.498.1258
www.quickset.com